

**Tropical**  
**Bliss**<sup>®</sup>  
Simply Paradise!

# Crafting your perfect living experience

Experience unparalleled living in spaces crafted with precision and passion.  
Your perfect home is here.



# About Us

Amaatra Group and Tropical Group proudly collaborate to present Tropical Bliss, combining their expertise in creating exceptional living spaces.

## Amaatra Group

Amaatra Group is one of the rising stars of North India and is expanding its wings in other cities including Mumbai. It has to its credit over **1 million square feet of successfully delivered residential and commercial spaces with more than 1,100+ satisfied customers.** Amaatra Group is ably led by **Mr. Mahender Bansal, Mr. Rajesh Chopra,** and **Mr. Umesh Gupta** who possess strong real estate background and command excellent financial strength. Amaatra as a group believes in timely and quality delivery and unfaltering commitment to innovation and customer focus which makes us stand out from the rest. We believe that reputation is built only by adhering to a steadfast professional approach, always.

## Tropical Group

Discover Tropical World, where stunning architecture, thoughtful design, and world-class amenities meets enviable location. **Your address here isn't just a place—it's a landmark,** reflecting the opulence built on trust, quality, and integrity. Beyond brick and mortar, Tropical World is crafted on human values and the trust of countless satisfied customers. With over two decades of excellence in real estate, our projects are a testament to our commitment to perfection.



Lobby

## Tropical Bliss

# Embrace the Tropical Lifestyle

Welcome to Tropical Bliss, where luxury meets tranquility. A prestigious development by Tropical World and Amaatra Group, Tropical Bliss is designed to offer an exclusive living experience that redefines elegance. Rising 22 stories high in the thriving heart of Thane, this iconic building redefines what it means to call a place home. We have meticulously planned every aspect of Tropical Bliss to cater to the discerning tastes of our clients. The architecture embodies contemporary aesthetics, with each apartment thoughtfully crafted to provide the perfect blend of comfort. Surrounded by lush Sanghavi Hills, Tropical Bliss offers a serene escape from the hustle of city life. With world-class amenities catering to your every need, Tropical Bliss ensures that each day brings you closer to your dream lifestyle. Discover the gold standard in construction, where uncompromising quality meets unparalleled amenities.





## Tropical Bliss Embrace the Tropical Lifestyle

**1 BHK:** Ideal for young professionals and small families, this home features a spacious living area, a cozy bedroom, and a well-equipped kitchen.

**2 BHK:** Perfect for families and individuals seeking extra space, as it offers two well-appointed bedrooms, a large living room, and modern amenities.

### Bedroom



TROPICAL  
BLISS

COSMOS MIRA SPERRY ZARA

The images shown are for illustration purposes only and may not be the actual appearance.

MahaRERA No. - P51700079373

# Internal Amenities

Experience exceptional living at Tropical Bliss.  
Enjoy amenities designed for comfort, convenience,  
and luxury—an oasis of true relaxation.



**Kitchen**

## Living and Dining

- Vitrified tiles measuring 600 x 1 200 mm.
- Heavy-duty powder-coated aluminum/UPVC windows with toughened glass.
- Gypsum walls adorned with acrylic emulsion paint from Asian or Dulux.
- Flush door with both side laminate finish.
- Provision for piping and wiring for air-conditioning.

## Bathrooms

- 600 x 600 mm anti-skid tiles.
- Experience high-quality sanitary ware.
- Good-quality CP fittings from Somany/Cera, Hindware, or an equivalent brand.
- Enter through a flush door with a laminate finish.
- Ensure proper ventilation through an exhaust fan.
- See yourself clearly with high quality mirror.
- Enjoy full-height wall tiles for a clean and stylish look.

## Smart Homes

- VDB (Video Door Bell).
- Operate T.V, Lights, Fan, AC of living room through your smart phones.
- Lock/Unlock your main door through your smart phones.

## Kitchen

- Vitrified tiles measuring 600x1 200 mm.
- Prepare meals on a platform with a granite top.
- Wash dishes in a steel sink with SS Mixture.
- Protect walls with dado tiles up to door height above the platform.
- Ensure proper ventilation through an exhaust fan.

## Bedrooms

- Master Bedroom's large format vitrified tiles measuring 600 x 1 200 mm.
- Heavy-duty powder-coated aluminium/UPVC windows with toughened glass.
- Gypsum walls adorned with acrylic emulsion paint from Asian or Dulux.
- Flush door with both side laminate finish.

## Electricals

- Electrical switch & sockets of Legrand/Anchor/L&T or equivalent brand.
- Stay connected with telephone and internet points in the living room and bedrooms.
- Prepare for power outages with provisions for an inverter point.



**Bathroom**



**Surveillance**



## Common Amenities

Experience the perfect blend of modern amenities and convenient living, thoughtfully designed for your comfort.

### Living Room



- **3 High-Speed Elevators** Thyssen, Schindler or Equivalent for efficient access to all floors, ensuring you spend less time waiting and more time enjoying your home.
- Receive a warm welcome in the **double-height designer entrance lobby**, creating a positive first impression and a sense of community.
- Admire the **premium exterior paint finish** such as Asian Paints or equivalent that enhances the building's durability and appeal, ensuring your home maintains its value over time.
- Enjoy uninterrupted power supply for common areas with the **generator backup**, providing peace of mind during power outages.
- Have fun in the indoor games room featuring **Card Games, Chess, Carrom, Pool Table, Gym** and **Foosball Table**, offering a variety of entertainment options for residents of all ages.
- Navigate safely and comfortably with **well-lit staircases** and **parking areas**, ensuring your security and convenience.
- Save energy, resources and reduce environmental impact through common **solar power energy** and **rain-water harvesting system**.
- Feel secure with the **IP camera surveillance**, offering added peace of mind and deterring potential intruders.



**Gym**

The images shown are for illustration purposes only and may not be the actual appearance.



**Indoor Games - Chess**

The images shown are for illustration purposes only and may not be the actual appearance.



**Parking**

The images shown are for illustration purposes only and may not be the actual appearance.



## Indoor Games

Designed as a social hub for residents, the indoor games area is ideal for events and gatherings. Whether you're looking to unwind, entertain, or socialize, our indoor games area provides the ideal setting for creating memorable moments and building the community feeling.

### Pool Table

# UNIT PLAN

1 BHK & 2 BHK

This is your ideal space for modern living in a compact layout  
for better clarity and engagement.

# Tropical Bliss<sup>®</sup>

Simply Paradise!

Jointly Developed by



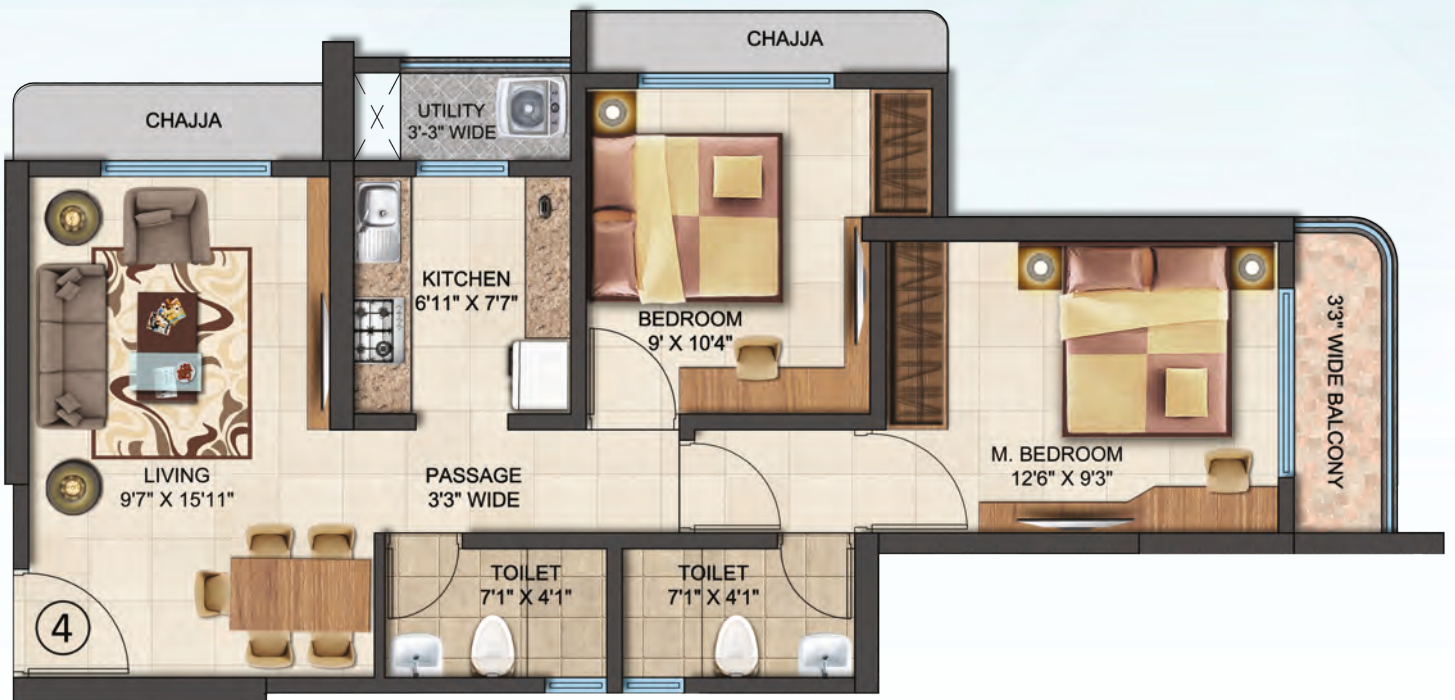
# UNIT PLAN - 1 BHK



Rera Carpet Area + Balcony Area  
385.67 sq.ft.      29.60 sq.ft.

Disclaimer: All specifications, design, facilities and dimensions, etc. are subject to the approval of the respective authorities and the developers reserve the right to change the specifications or features without any notice or obligation. The details contained in the leaflets/brochures or any other printed material are only indicative and artistic imagination, may not be accurate, and the same does not form either the basis or part of the offer or contract. Images are for representative purposes only. They can be available in metric scale, on request. Conditions apply.

# UNIT PLAN - 2 BHK



Rera Carpet Area + Balcony Area  
591.18 sq.ft.      27.04 sq.ft.

Disclaimer: All specifications, design, facilities and dimensions, etc. are subject to the approval of the respective authorities and the developers reserve the right to change the specifications or features without any notice or obligation. The details contained in the leaflets/brochures or any other printed material are only indicative and artistic imagination, may not be accurate, and the same does not form either the basis or part of the offer or contract. Images are for representative purposes only. They can be available in metric scale, on request. Conditions apply.

# UNIT PLAN

Refuge Floor Plan & Typical Floor Plan

This is your ideal space for modern living in a compact layout  
for better clarity and engagement.

# Tropical Bliss<sup>®</sup>

Simply Paradise!

Jointly Developed by



# REFUGE FLOOR PLAN

8<sup>th</sup>/13<sup>th</sup>/18<sup>th</sup> - Floor



REFUGE FLOOR



## KEY PLAN

Disclaimer: All specifications, design, facilities and dimensions, etc. are subject to the approval of the respective authorities and the developers reserve the right to change the specifications or features without any notice or obligation. The details contained in the leaflets/brochures or any other printed material are only indicative and artistic imagination, may not be accurate, and the same does not form either the basis or part of the offer or contract. Images are for representative purposes only. They can be available in metric scale, on request. Conditions apply.

# TYPICAL FLOOR PLAN

2<sup>nd</sup> to 7<sup>th</sup>/9<sup>th</sup> to 12<sup>th</sup>/14<sup>th</sup> to 17<sup>th</sup>/19<sup>th</sup> to 22<sup>nd</sup>



TYPICAL FLOOR



## KEY PLAN

Disclaimer: All specifications, design, facilities and dimensions, etc. are subject to the approval of the respective authorities and the developers reserve the right to change the specifications or features without any notice or obligation. The details contained in the leaflets/brochures or any other printed material are only indicative and artistic imagination, may not be accurate, and the same does not form either the basis or part of the offer or contract. Images are for representative purposes only. They can be available in metric scale, on request. Conditions apply.



# UNIT PLAN

Ground + Parking Floor Plan

This is your ideal space for modern living in a compact layout  
for better clarity and engagement.

# Tropical Bliss

Simply Paradise!

Jointly Developed by



# GROUND + PARKING FLOOR PLAN



GROUND FLOOR

## KEY PLAN

Disclaimer: All specifications, design, facilities and dimensions, etc. are subject to the approval of the respective authorities and the developers reserve the right to change the specifications or features without any notice or obligation. The details contained in the leaflets/brochures or any other printed material are only indicative and artistic imagination, may not be accurate, and the same does not form either the basis or part of the offer or contract. Images are for representative purposes only. They can be available in metric scale, on request. Conditions apply.



## KEY DISTANCE

Byke Plaza Hotel	-----	0.5 KM
Royal Plaza Hotel	-----	0.5 KM
Saraswati School	-----	1.0 KM
New Horizon School	-----	1.0 KM
Kasarvadavali Police Station	-----	0.5 KM
Currae Hospital	-----	1.5 KM
Horizon Hospital	-----	1.5 KM
Metro Station	-----	0.75 KM
DMART	-----	0.5 KM
Anand Nagar Bus Depot	-----	0.75 KM
Thane Railway Station	-----	9.0 KM
International Airport	-----	28.5 KM
Domestic Airport	-----	31.5 KM
Panvel (Proposed Int. Airport)	-----	43.5 KM

**Tropical**  
**Bliss**  
Simply Paradise!

Join us at Tropical Bliss and elevate your lifestyle today! Contact us to schedule a visit.

**Project Developed by Amaatra Tropical Buildwell Pvt. Ltd.**

Corp Office: 7th floor, Sun Plaza, Hari Om Nagar, Off E. E. Highway,  
Mulund (East), Mumbai - 400081

Phone: +91 73047 72308 | Email: info@tropicalworld.co.in

Tropical Bliss Site Address:

Sanghavi Hills, Near Suraj Water Park, Behind Dmart,  
Ghodbunder Road, Kavesar, Thane West, Mumbai : 400607

Scan QR Code to Download Brochure



Our Consultants



KISAN D. SUKRE B.A.,LLB  
ADVOCATE - HIGH COURT

This registration is granted under section 5 of the maha rera Act to the following  
project under project registration number: P51700079373

Disclaimer: All specifications, design, facilities and dimensions, etc. are subject to the approval of the respective authorities and the developers reserve the right to change the specifications or features without any notice or obligation. The details contained in the leaflets/brochures or any other printed material are only indicative and artistic imagination, may not be exact or accurate, and the same does not form either the basis or part of the offer or contract. Images are for representative purposes only. They can be available in metric scale, on request. Conditions apply.